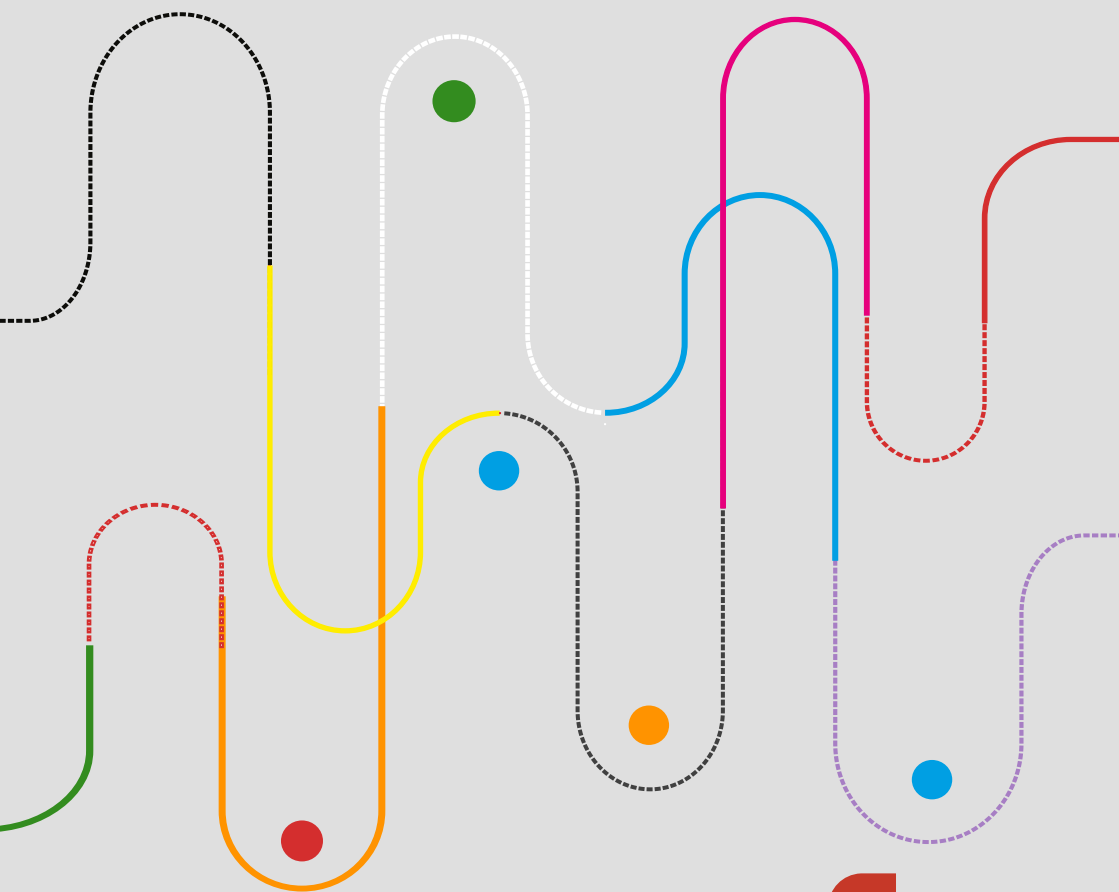


WASTE SOLUTIONS

LOOK BOOK 22-23



BLUESTREAM
WASTE · STREET FURNITURE · PLAY

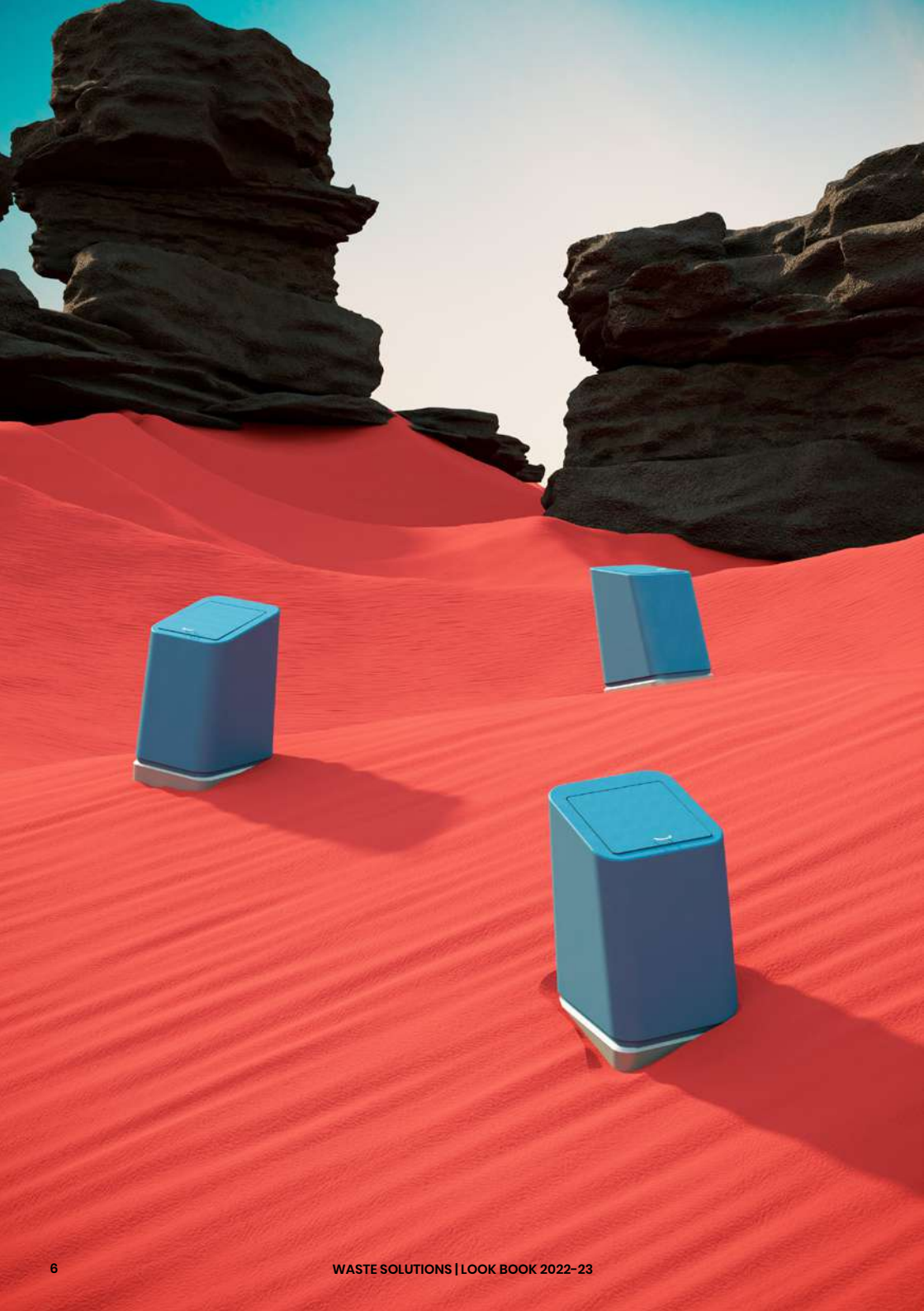


LOOK BOOK 2022-23



CATALOGUE CONTENTS

Our Vision	6 - 7
What We Do	8 - 9
About Us	10 - 11
History	12 - 13
Enhancing the Environment	14 - 15
Our Solutions	16 - 17
Bluestream Expertise	18 - 19
Our Process	20 - 21
The Ecosystem	22 - 23
Our Commitment	24 - 25
Bluestream & Sustainability	26 - 27
Projects	28 - 35
Contemporary Arabia	36 - 37
Research & Innovation	38 - 39
Sustainable Urbanism	40 - 41
Our Clients	44 - 45
Bins	50 - 67



OUR VISION

Dotting the landscapes of Arabia

Born in Dubai, we stay true to its culture of diversity focusing on innovation, distinguishing ourselves with flexibility in the creative process and staying open to future possibilities. Intentional with our designs, we try to see things differently and hence we do things differently. Ever probing, exploring and experimenting, we work towards enriching cities.

WHAT
WE DO

Developing urban spaces, building stronger communities

What started with one man, Mr. Suvarna Jeetendra's initiative to meet Dubai's growing needs for a sophisticated waste management system, has today bloomed into a full stack design and manufacturing solution for various urban elements.



ABOUT BLUESTREAM

Bluestream's mission is to accelerate sustainable urbanism. Cities will host up to 70% of the global population by 2050 and making them viable in all respects is the need of the hour.

Focused on bringing delight to urban spaces in every sense, we holistically develop products across **Street + Waste + Play** Categories - all but in a sustainable manner.



Global Village

Making good design accessible

We are dedicated to striking a balance between affordable costs, design appeal and increased lifetime value of our products.

BLUESTREAM OVER THE YEARS



First Client:
Dubai Municipality

1999



Moved to a new
facility at Al Quoz

2010



Nord implemented
for Dubai Municipality

2017



Upgraded to
facility at Jebel Ali

2019

1998

The Inception:
First office at
Karama



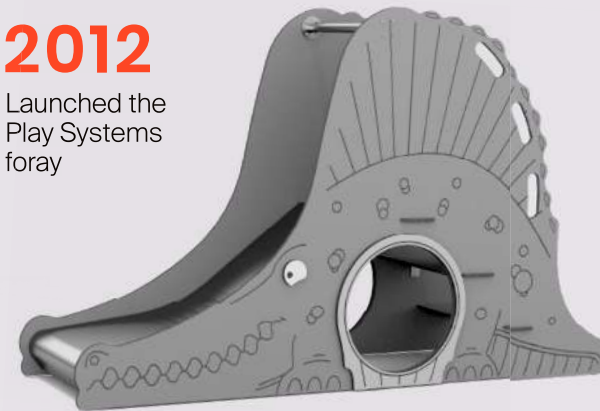
2007

Launched the
Street Furniture
foray



2012

Launched the
Play Systems
foray



2020

Launched the
Sani-Station to
promote
sanitization
measures to
combat Covid-19



“CULTURES &
CLIMATES DIFFER
ALL OVER THE
WORLD, BUT PEOPLE
ARE THE SAME.
THEY’LL GATHER IN
PUBLIC IF YOU GIVE
THEM A GOOD PLACE
TO DO IT.”

- Jan Gehl



SOLUTIONS TO FIT EVERY NEED

No matter the project, budget or functional needs, it's our mission to use our expertise to bring our client's visions to life. Each relationship is tailored to meet the parameters of the project, and we strive to make the client comfortable with both our process and their investment.

BEN 20.2



BEN 26.1

Turnkey Solutions

Our turnkey solutions are ready to install, high speed-to-market and cost efficient demands. We also offer a range of customizations to choose from, modifying existing products in sizes, materials, colours or finishes to blend into the specific aesthetics and themes onsite.

Bespoke Designs

With our Bespoke service, we tailor make products right from design to execution. Suitable for clients desiring one of a kind pieces, products are conceptualized and made to order considering the functional, aesthetic and experiential aspirations of their project.

OUR
EXPERTISE

24 YEARS of Expertise

Custom design and manufacturing is our specialty. With a robust manufacturing facility and strong in-house design team, we dedicate ourselves to the service of urban planners and developers.

Having continually designed and delivered outdoor elements for some of MENA's most prestigious projects, we offer a wealth of knowledge and experience working with the regions unique environmental challenges.



Endless Possibilities

DESIGN & FABRICATION

OUR PROCESS

Bringing your project to life

We are confident in our capabilities to design and transform concepts to reality, our clients enjoy our complete support to push creative boundaries in their urban spaces.



1 DESIGN CONSULTATION

Exploring your project requirements, functional / technical parameters and your vision for the project. Depending on the discussions, we recommend either a standard, customized or bespoke solution.



2 CONCEPTS & ESTIMATION

Offering a variety in materials, finishing and form, our team then presents detailed design sketches, layouts, 3D models, schedule, and budgetary estimations for your selection.



3 SAMPLING & PROTOTYPING

A selection of physical material samples and swatches are curated for your review. Once approved, prototyping commences for sample of the product.

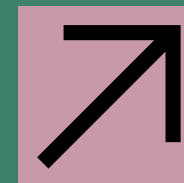


4 PRODUCTION & MANUFACTURING

On satisfactory approval of the sample, production ensues, with a prime focus on delivering the quality, precision and attention to detail that we have become known for.

5 INSTALLATION & MAINTENANCE

We also offer and recommend a range of maintenance solutions, should you wish to avail our professional services with technical expertise & some deliveries include on-site installation & maintenance.



OUR ECOSYSTEM

How we make it happen



OUR TEAMS

Our strong in-house design team and experienced team of craftsmen, ensures we deliver even on the most ambitious and challenging project requirements.

Our team of product consultants is always available to help clients discuss and decide the best solutions. We also welcome factory visits to explore our facility and interact with our team for the ultimate Bluestream Experience.



OUR FACILITY

Located in Jebel Ali, our 170,000 sqft, state of the art manufacturing facility is equipped with specialized machinery and dedicated workshops to process an array of materials: Metal, Timber, Granite, GRC, GRP, Concrete.

OUR PARTNERS

A long standing relationship with our established network of suppliers enables us to offer high quality materials on schedule.

Collaborating with paint partner Jotun, we formulate uniquely weather resilient solutions.

Our partners, Nord Engineering collaborate with us on both technological association and as solution providers for a completely automated waste collection systems.



OUR COMMITMENT



PRODUCT WARRANTY

Depending on the material, we offer Warranties of up to 50 years



ECONOMIC BENEFIT

Affordable design and increased lifetime value of products



CERTIFIED & ATTESTED



AFTER SALES SERVICE

Dedicated team for after sales service for maintenance & upkeep



GREEN PRACTICES

Solar panel installations, motion sensitive devices to reduce wastage

ISO 9001
14001
OHSAS 18001



QUALITY MATERIALS

Our focus remains on ensuring use of high quality materials, resulting in exceptional long term lifetime of our products. This ensures minimal environmental impact and complete customer satisfaction which are both mission critical for us.

Across the varying materials used, we go great lengths to ensure quality material preparation and surface protection.

For example for all our Steel our painting procedure follows the strictest methodology from Jotun's Technical Department to meet the harsh weather conditions we are in.

For all our Granite surfaces we use a very specialized nano coating that penetrates and ensures the surface is completely hydrophobic.

This obsession with quality drills down to the screws which are all SS 316L Marine Grade.

Quality is a learning process and it happens relentlessly.

STANDARD MATERIAL OPTIONS



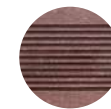
STAINLESS STEEL



EPOXY COATED STEEL



GALVANIZED STEEL



WPC



BLACK GRANITE



GREY GRANITE



WOOD



HPL

Bluestream & Sustainability

- If you've ever purchased a Bluestream product, you can return it to us for environmentally friendly disposal. We'll be able to renovate it and return it to you as well. It's our contribution to the circular economy.
- You can buy things produced entirely of recycled materials on a regular basis. For example, waste pallets and waste steel packing material can be used to make wood and steel furniture. We have a steady stream of clients who have long-term relationships with us for such needs.
- In our office and manufacturing, we use a five-stream trash collection system.
- We use data analytics to track our waste streams to understand how we can reduce our waste generation.
- We are a member of the Dubai Chamber of Commerce's Dubai Environmental Chapter, which is constantly pushing us to take on new sustainability initiatives.

- We provide customers with a truly sustainable alternative to hardwood in the form of coconut wood wooden parts.
- We provide Granite Street furniture since it has the highest LTV (lifetime value) as a product with a 50-year warranty and never needs to be thrown out due to product failure.
- By the fourth quarter of 2022, we hope to have complete EPD (Environmental Data Protection) data for all of our basic goods.
- We exclusively use JOTUN paints that have been particularly selected from their Green Building Initiatives that are low in VOCs and have a minimal environmental impact.
- As part of our green building initiatives, light-saving motion sensors, motion-sensitive faucets, and air blades without tissues are all standard in our office toilets.

member of **Sustainability**
2022 **Dubai** Chamber **Network**

PROJECTS AT A GLANCE





Dubai Marina Walk



City Center Al Zahia Sharjah



The Beach, Meraas



Al Seef, Meeras



Mall of the Emirates, Dubai



Mall of the Emirates, Dubai



Anantara, The Palm Dubai Resort



The Dubai Mall, Dubai



Dubai Ambulance Office, Warsan



The Pointe, The Palm Jumeirah



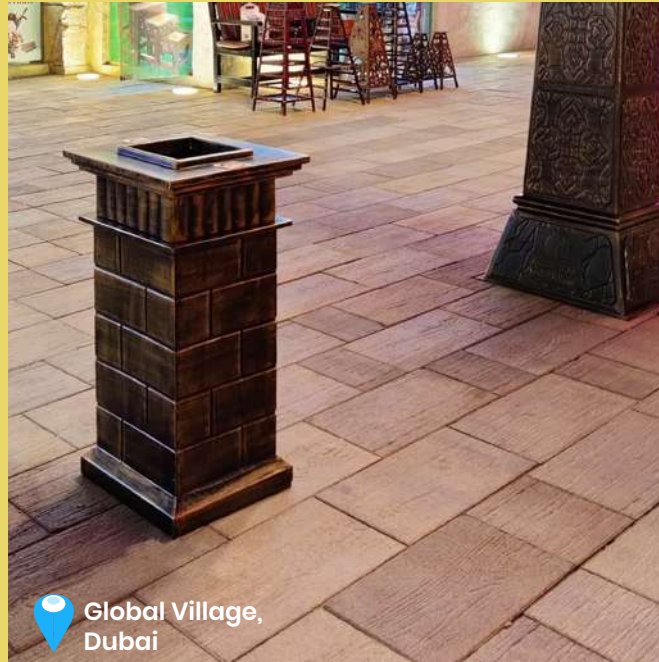
Ghorroob Community Mirdif



Palm Jumeirah, Dubai



Dragon Mart - Dubai



Global Village, Dubai



Al Seef, Meraas



Mamsha Owners Association - Abu Dhabi



Global Village, Dubai



Rahmiya Mall, Sharjah



4
TGR 9.1

1
BEN 14.2

2
BIN 14.1

3
PTR 2.1

CONTEMPORARY ARABIA

- 1 BENCHES
- 2 BINS
- 3 PLANTERS
- 4 TREE GRATES

Ever Growing, Evolving and Adapting

New product design and development in existing spaces - with project based requirements and yearly release of new and unique products serving each of our client's requirements in the urban space sector.

22/23 Highlights



MATERIAL OF CHOICE

Always build with long lasting high quality material choices. This has lead us to be one of the first to conceptualize and execute a complete Granite made range of street furnishing elements.



AUGMENTED REALITY

Enhancing the presentation & demonstration of products through AR/VR technologies to interactively showcase products on location is a key experience that is currently in development.



NETWORKED URBANISM

Tech integration into existing products to study utilization, providing asset managers ample data on how to improve public areas further.



EXCEPTIONAL NORMALITY

Innovating product design in exceptionally challenging times. An example is the **Sani Station** an innovative product that was designed and developed to help businesses operate safely during Covid19- crisis. The product received fame internationally. The product has a demand from goverment sectors and international markets. Ex - Le District, New York City, Mubadala, Dubai Ambulance etc.

URBANISM & SUSTAINABILITY

We view environmental sustainability as an indispensable part of current and future organizations. It is a cause that we strive to integrate into every aspect of our functionality.

At Bluestream right from the concept design, to raw material management, resource allocation or waste recycling, everything is centered around sustainability.



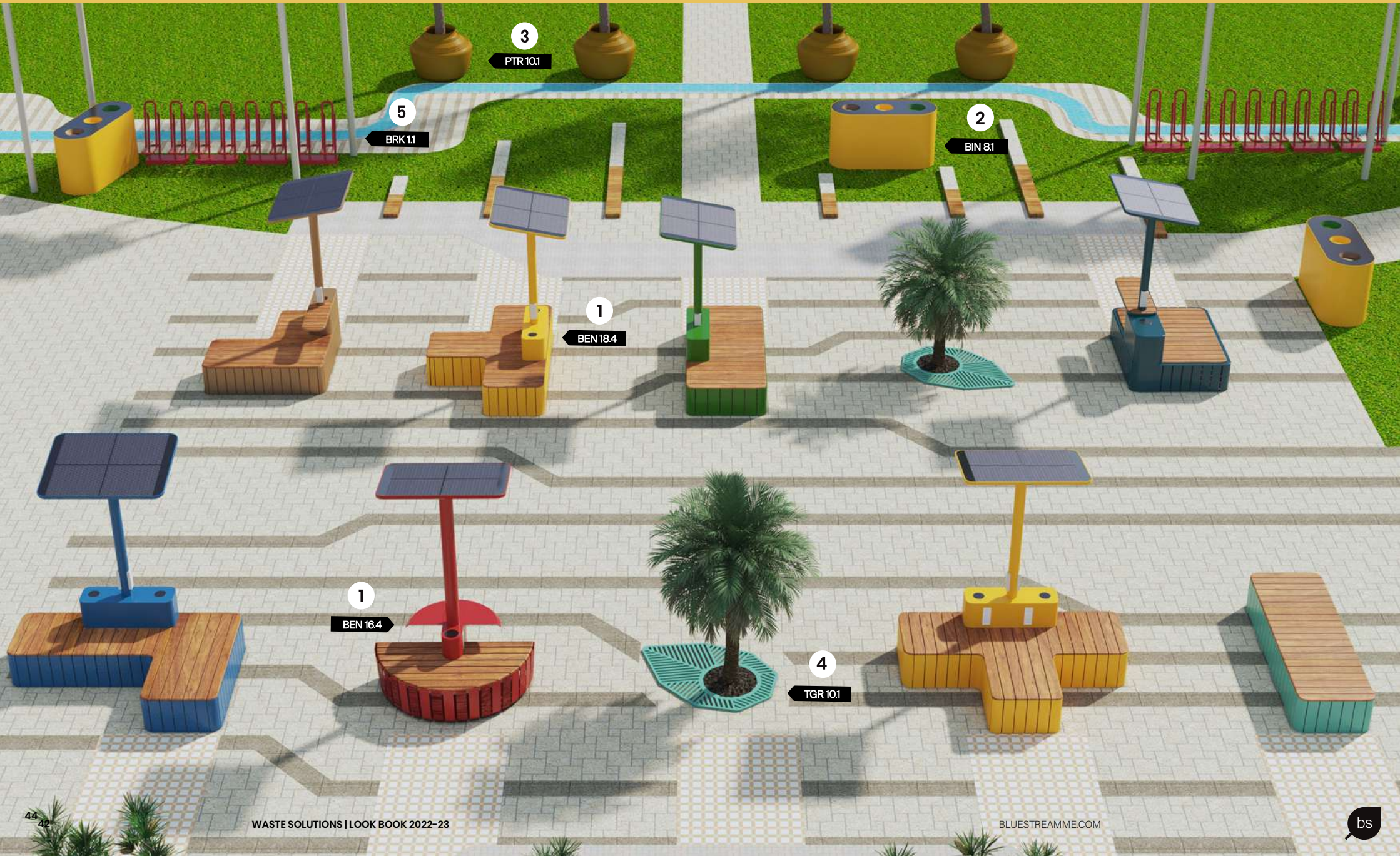
Driving Sustainable Urbanism





MODULAR SOLAR POWERED BENCHES

- 1 BENCHES
- 2 BINS
- 3 PLANTERS
- 4 TREE GRATES
- 5 BIKERACKS



3

PTR 10.1

5

BRK 1.1

1

BEN 18.4

2

BIN 8.1

1

BEN 16.4

4

TGR 10.1

OUR CLIENTS

CLIENTS



CONSULTANTS



CONTRACTORS





3
PTR 7.1

1
BEN 11.3C

4
TRG 10.1

1
BEN 21.3

5
BLD 2.2

2
BIN 12.2

SPACES OF RECREATION

- 1 BENCHES
- 2 BINS
- 3 PLANTERS
- 4 TREE GRATES
- 5 BOLLARDS

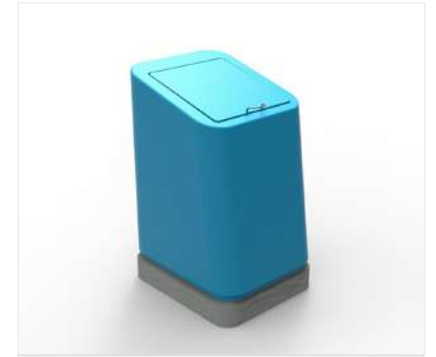


PRODUCTS

2022 - 23



ALTO
STEEL
W 400 L 400 H 900



BBQ BIN
STEEL
W 700 L 600 H 900



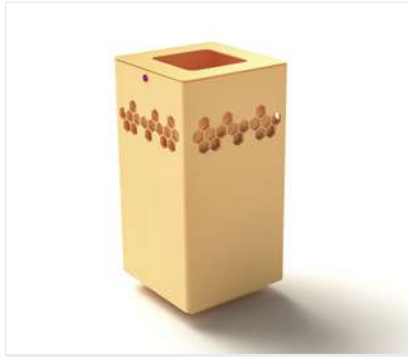
LUME
STEEL
W 360 L 360 H 760



ELECTRONIC E-WASTE BIN
STEEL
W 360 L 360 H 760



JARL
STEEL
W 400 H 800



STARR
STEEL
W 400 L 400 H 800



SENTRY TIMBER
WOOD, STEEL
W 390 L 390 H 880



RICCARDO TIMBER
GRANITE, WOOD
W 300 L 400 H 1050

Why are we the right partner for you?

We recommend direct painting of labels (recycling logos and other customizations) on the bin so that there are no maintenance issues associated with sticker labels and replacements.

We design each bin with the possibility of fixing an ashtray - which is provided with a perforated plate to stub the cigarette with easy access and for stub removal.

Bins are provided with GI inner liner with foldable handles for easy handling.

Why Waste Management with us?

We think about free-standing vs fixed to the ground.

We make the bins bottom heavy to avoid being tipped over or being blown over in heavy winds which we experience often in Dubai.

We usually don't advocate lock & key as it's usually possible to hide the door functionality and limit its knowledge to the regular waste handlers.

We use only SS 316 accessories to minimize maintenance and maximize the life of the product. These include screws, nuts and bolts, hinges, locks and keys.



RICCARDO SLANT
GRANITE, STEEL
W 300 L 400 H 1050



RICCARDO
GRANITE, STEEL
W 300 L 400 H 1050



OTARI
STEEL
W 370 L 370 H 930



GI TAURUS
STEEL
W 420 L 420 H 940



JUMBO FOOD COURT
STEEL
W 645 L 645 H 1400



METAL POLE BIN WITH SIGNAGE
STEEL
W 300 L 350 H 1600



LUMBI WITH SHADE
STEEL
W 450 L 450 H 900



BINCON 660L
STEEL
W 1000 L 1200 H 1200





BINCON 240L
STEEL
W 600 L 600 H 900



SS Ballerina
STEEL
W 310 L 310 H 810



VITLI SMOKING
STEEL
W 200 L 200 H 700



DOG BIN
STEEL
W 300 L 300 H 700



DRUSILLA
STEEL, TIMBER
W 500 L 500 H 1000



EMMA
STEEL, TIMBER
W 500 L 400 H 1000

We do bespoke well.

Custom design your
bins with Bluestream

“

“DESIGN CREATES CULTURE,
CULTURE SHAPES VALUES,
VALUES DETERMINE
THE FUTURE.”

-Robert L. Peters-



”



MODERNA
STEEL
W 340 L 950 H 800



NEPTUNE
STEEL
W 370 L 1130 H 835



BENZO
STEEL
W 340 L 950 H 800



BAMBI
STEEL, WOOD
W 380 L 950 H 1000



RECYCLING CAGE
STEEL
W 1130 L 1400 H 1730



LORETTA
STEEL
W 380 L 950 H 800



KOSMO
STEEL
W 380 L 950 H 800



RENZO
STEEL
W 380 L 950 H 800



CUBO
STEEL
W 380 L 950 H 800



HADRIAN
STEEL, TIMBER
W 300mm L 1050 H 1050



STAZIONE
STEEL
W 450 L 1100 H 1200



SERGIO
STEEL
W 300 L 800 H 800



How can Bluestream make your life easier?

We can design the bins with Mild Steel, Stainless Steel, Granite, & Timber based on a combination of aesthetic preferences and functional practicality.

We metallize the steel and then epoxy coat them as per JOTUN Methodology. This ensures 10 years rust free warranty on the bins.

We always focus on dimensions to meet ADA compliance on usability.



CLAYRE
STEEL
W 300 L 1050 H 1050



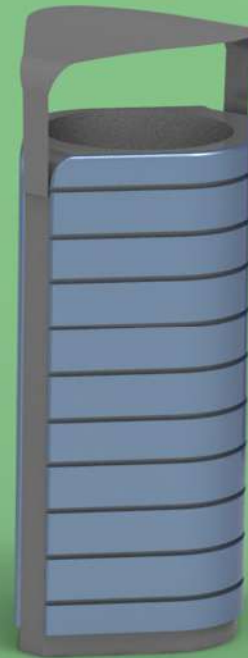
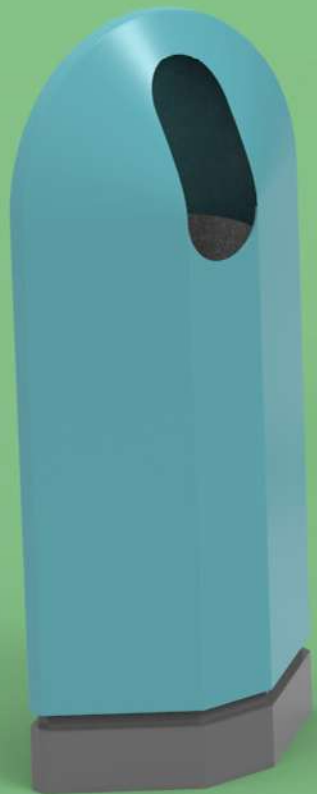
NOX
TIMBER, STEEL
W 400 L 800 H 800



CAMILLE
STEEL, TIMBER
W 300 L 1050 H 1050

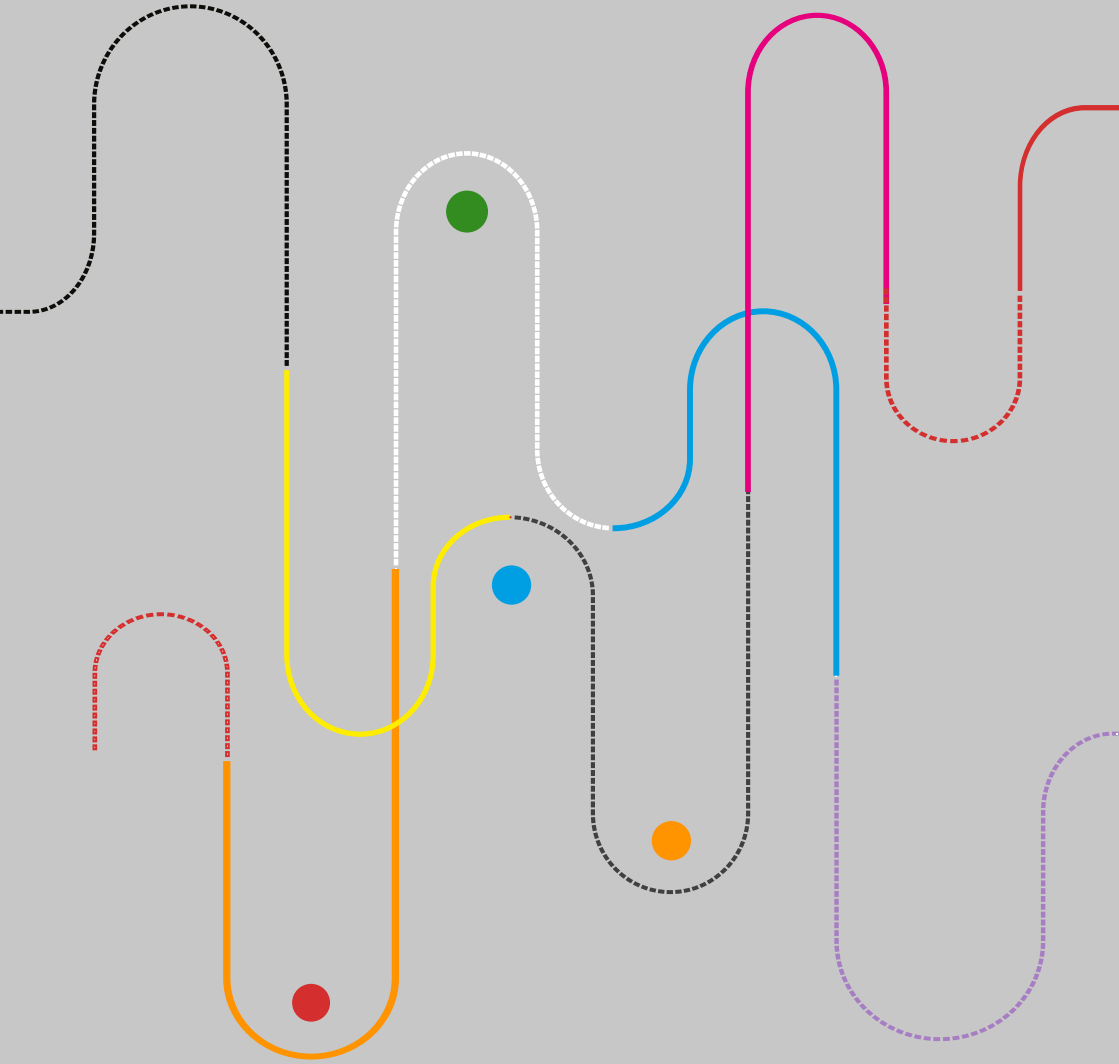


JULES
STEEL
W 300 L 1050 H 1050





“Any product that needs a manual to work is broken.”


- Elon Musk




hello@bluestreamme.com

 +971 48868478

 +971 52 376 0541

 +966 13 330 8517

 +966 55 304 1496

TP 040101, National Industries park
P O Box 120507, Dubai, UAE

P O box 32348, Level 21, Al Shaikh Tower,
Al Khobar, 31952, Saudi Arabia



BLUESTREAMME.COM