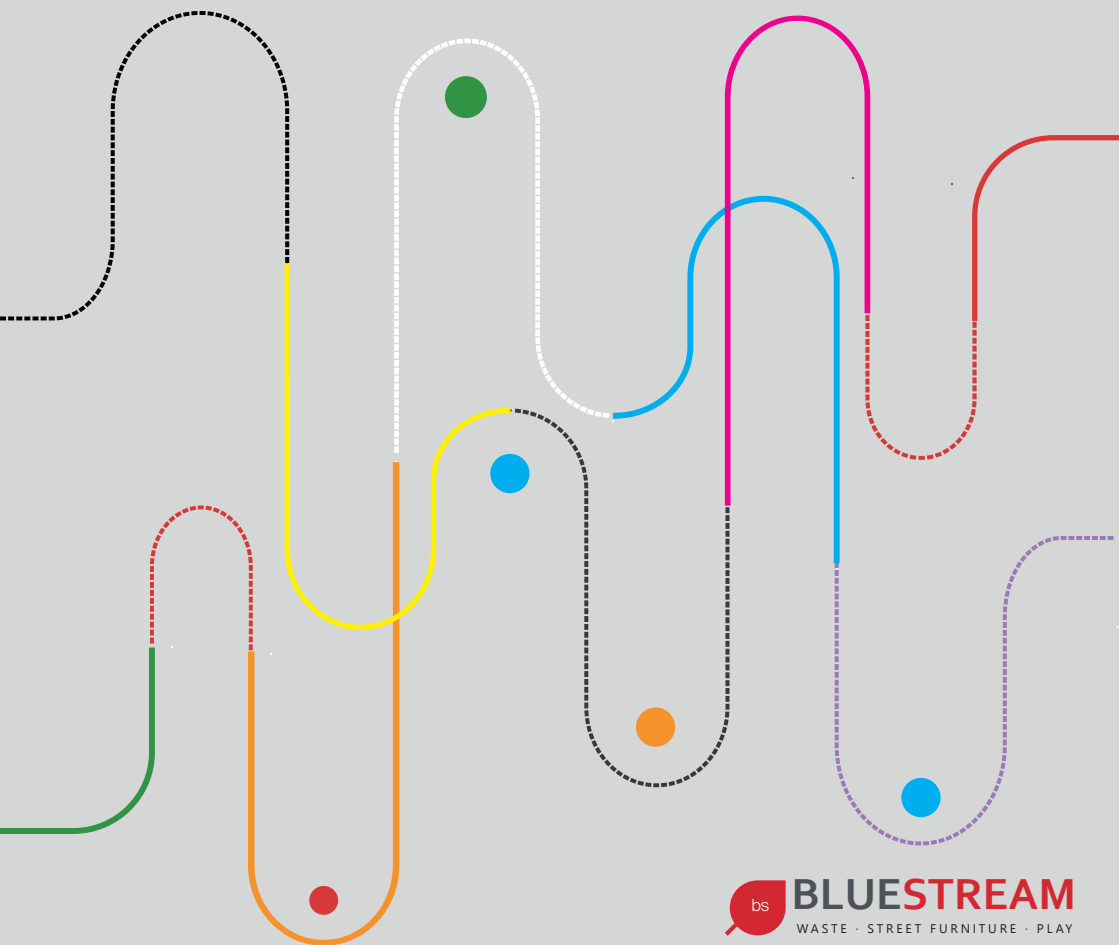


# STREET FURNITURE



LOOK BOOK 21-22



## ABOUT BLUESTREAM

Bluestream's mission is to accelerate sustainable urbanism. Cities will host upto 70% of the global population by 2050 and making them viable in all respects is the need of the hour.

Focused on bringing delight to urban spaces in every sense, we holistically develop products across **Street + Waste + Play** Categories - all but in a sustainable manner.



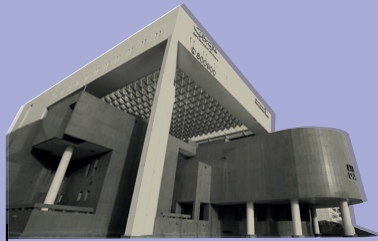
AI Seef, MERAAS

# Making good design accessible

We are dedicated to striking a balance between affordable costs, design appeal and increased lifetime value of our products.



## BLUESTREAM OVER THE YEARS



First Client:  
Dubai Municipality

**1999**



Moved to a new  
facility at Al Quoz

**2010**



Nord implemented  
for Dubai Municipality

**2017**



Upgraded to  
facility at Jebel Ali

**2019**

**1998**

The Inception:  
First office at  
Karama



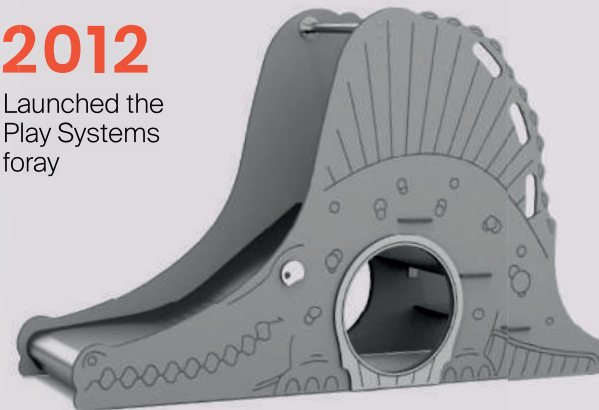
**2007**

Launched the  
Street Furniture  
foray



**2012**

Launched the  
Play Systems  
foray



**2020**

Launched the  
Sani-Station to  
promote  
sanitization  
measures to  
combat Covid-19



## OUR EXPERTISE

# 24 YEARS of Expertise

Custom design and manufacturing is our specialty. With a robust manufacturing facility and strong in-house design team, we dedicate ourselves to the service of urban planners and developers.

Having continually designed and delivered outdoor elements for some of MENA's most prestigious projects, we offer a wealth of knowledge and experience working with the regions unique environmental challenges.



# Endless Possibilities

DESIGN & FABRICATION

## OUR PROCESS

# Bringing your project to life

We are confident in our capabilities to design and transform concepts to reality, our clients enjoy our complete support to push creative boundaries in their urban spaces.



## 1 DESIGN CONSULTATION

Exploring your project requirements, functional / technical parameters and your vision for the project. Depending on the discussions, we recommend either a standard, customized or bespoke solution.



## 2 CONCEPTS & ESTIMATION

Offering a variety in materials, finishing and form, our team then presents detailed design sketches, layouts, 3D models, schedule, and budgetary estimations for your selection.



## 3 SAMPLING & PROTOTYPING

A selection of physical material samples and swatches are curated for your review. Once approved, prototyping commences for actual sample creation of the product.

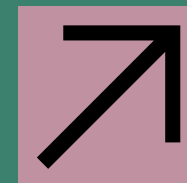


## 4 PRODUCTION & MANUFACTURING

On satisfactory approval of the sample, production ensues, with a prime focus on delivering the quality, precision and attention to detail we have become known for.

## 5 INSTALLATION & MAINTENANCE

Some deliveries include on-site installation & maintenance. We also offer and recommend a range of maintenance solutions, should you wish to avail our professional services with technical expertise



## OUR ECOSYSTEM

# How we make it happen



### OUR TEAMS

Our strong inhouse design team and experienced team of craftsmen, ensures we deliver even on the most ambitious and challenging project requirements.

Our team of product consultants is always available to discuss and help clients decide the best solutions. We also welcome factory visits to explore our facility and interact with our team for the ultimate Bluestream Experience.



### OUR FACILITY

Located at Jebel Ali, our 170,000 sqft, state of the art manufacturing facility is equipped with specialized machinery and dedicated workshops to process an array of materials: Metal, Timber, Granite, GRC, GRP, Concrete.



### OUR PARTNERS

A long standing relationship with our established network of suppliers enables us to offer high quality materials on schedule.

Collaborating with paint partner Jotun, we formulated uniquely weather resilient solutions.

Our partners, Nord Engineering collaborate with us on both technological association and as solution providers for a completely automated waste collection system.

## OUR COMMITMENT



### PRODUCT WARRANTY

Depending on the material, we offer Warranties of up to 50 years



### ECONOMIC BENEFIT

Affordable design and increased lifetime value of products



### CERTIFIED & ATTESTED



### AFTER SALES SERVICE

Dedicated team for after sales service for maintenance & upkeep



### GREEN PRACTICES

Solar panel installations, motion sensitive devices to reduce wastage

**ISO** 9001  
14001  
**OHSAS** 18001



### QUALITY MATERIALS

Our focus remains on ensuring use of the high quality materials, resulting in exceptional long term lifetime of our products. This ensures minimal environmental impact and complete customer satisfaction which are both mission critical for us.

Across the varying materials used, we go great lengths to ensure quality material preparation and surface protection.

For example for all our Steel our painting procedure follows the strictest methodology from Jotun's Technical Department to meet the harsh weather conditions we are in.

For all our Granite surfaces we use a very specialized nano coating that penetrates and ensures the surface is completely hydrophobic.

This obsession with quality drills down to the screws which are all SS 316L Marine Grade.

Quality is a learning process and it is happening relentlessly.

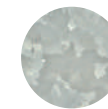
### STANDARD MATERIAL OPTIONS



STAINLESS STEEL



EPOXY COATED STEEL



GALVANIZED STEEL



GRC



GRP



BLACK GRANITE



GREY GRANITE



WOOD



HPL



WPC

# PROJECTS AT A GLANCE





Town Square, NSHAMA



Town Square, NSHAMA



Town Square, NSHAMA



Town Square, NSHAMA



Town Square, NSHAMA



Town Square, NSHAMA

## OUR CLIENTS

### CLIENTS



### CONSULTANTS



### CONTRACTORS



# PRODUCTS

## 2021 - 22



“ THERE ARE TWO KINDS OF COMPANIES. THOSE THAT WORK TO TRY TO CHARGE MORE AND THOSE THAT WORK TO CHARGE LESS. WE WILL BE THE SECOND. ”

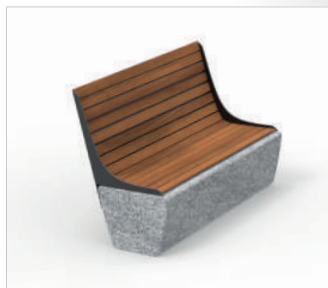
- Jeff Bezos



**elvis**  
BEN 9.3a  
STEEL, WOOD / HPL, GRANITE  
W 480 L 1660 H 400



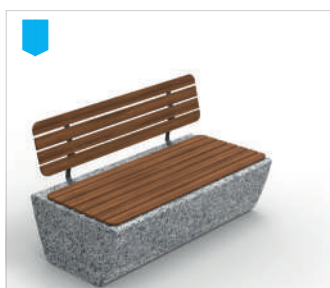
**ara**  
BEN 9.3b  
STEEL, WOOD / HPL, GRANITE  
W 530 L 1660 H 780



**daksha**  
BEN 11.3c  
STEEL, WOOD / HPL, GRANITE  
W 600 L 1660 H 920



**tera**  
BEN 11.2a  
STEEL, WOOD / HPL, GRANITE  
W 480 L 1660 H 400



**zia**  
BEN 11.3b  
STEEL, WOOD / HPL, GRANITE  
W 540 L 1660 H 720



**nova**  
BEN 11.4d  
STEEL, WOOD / HPL, GRANITE  
W 1600 L 1596 H 2060



**eline x**  
BEN 25.3a  
STEEL, WOOD / HPL, GRANITE  
W 420 L 1660 H 500



**eline**  
BEN 25.3b  
STEEL, WOOD / HPL, GRANITE  
W 600 L 1660 H 795



**DARA**  
BEN 9.3a  
Metal | Granite  
W 450 - L 1500 - H 650



**lica**  
BEN 29.2a  
STEEL, GRANITE  
W 500 L 500 H 650



**luca**  
BEN 1.2  
STEEL, GRANITE



**fona**  
BEN 12.2a  
STEEL, GRANITE  
W 500 L 500 H 650



**luna**  
BEN 9.3b  
STEEL, GRANITE  
W 550 L 1480 H 670



**dina**  
BEN 21.3  
STEEL, WOOD / HPL, GRANITE  
W 480 L 500 H 720



**alba**  
BEN 22.2  
STEEL, GRANITE  
W 400 L 500 H 400



**como**  
BEN 4.2b  
STEEL, GRANITE  
W 500 L 490 H 800



**elio**  
BEN 4.2a  
STEEL, GRANITE  
W 400 L 400 H 400



**lara**  
BEN 17.2  
STEEL, GRANITE  
W 630 L 500 H 800



**samoa**  
BEN 3.2  
STEEL, WOOD / HPL  
W 550 L 500 H 800



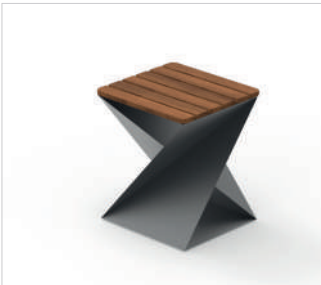
**xl**  
BEN 20.2  
STEEL, WOOD / HPL  
W 600 L 470 H 860



**natia**  
BEN 6.2  
STEEL, WOOD / HPL  
W 440 L 440 H 732



**prato**  
BEN 23.2  
STEEL, WOOD / HPL  
W 400 L 400 H 400



**hola**  
BEN 27.2  
STEEL, WOOD / HPL  
W 500 L 500 H 500



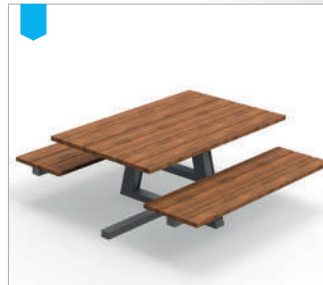
**faven**  
BEN 28.2  
STEEL, WOOD / HPL  
W 650 L 1480 H 825



**sarovar**  
BEN 31.2  
STEEL, WOOD / HPL  
W 1560 L 1640 H 760



**vindy**  
BEN 30.2  
STEEL, WOOD / HPL  
W 1560 L 1620 H 760



**tuscany**  
BEN 32.2  
STEEL, WOOD / HPL  
W 1560 L 1600 H 760



**leor 2**  
BEN 15.2c  
STEEL, WOOD / HPL  
W 600 L 1600 H 788



**leor 1**  
BEN 15.2b  
STEEL, WOOD / HPL  
W 610 L 1600 H 570



**leor**  
BEN 15.2a  
STEEL, WOOD / HPL  
W 610 L 1600 H 400



**troy**  
BEN 13.2  
STEEL, WOOD / HPL  
W 595 L 1500 H 800



**vegas**  
BEN 8.2  
STEEL, WOOD / HPL  
W 600 L 1600 H 780



**liana**  
BEN 14.2  
STEEL, WOOD / HPL  
W 595 L 1500 H 800



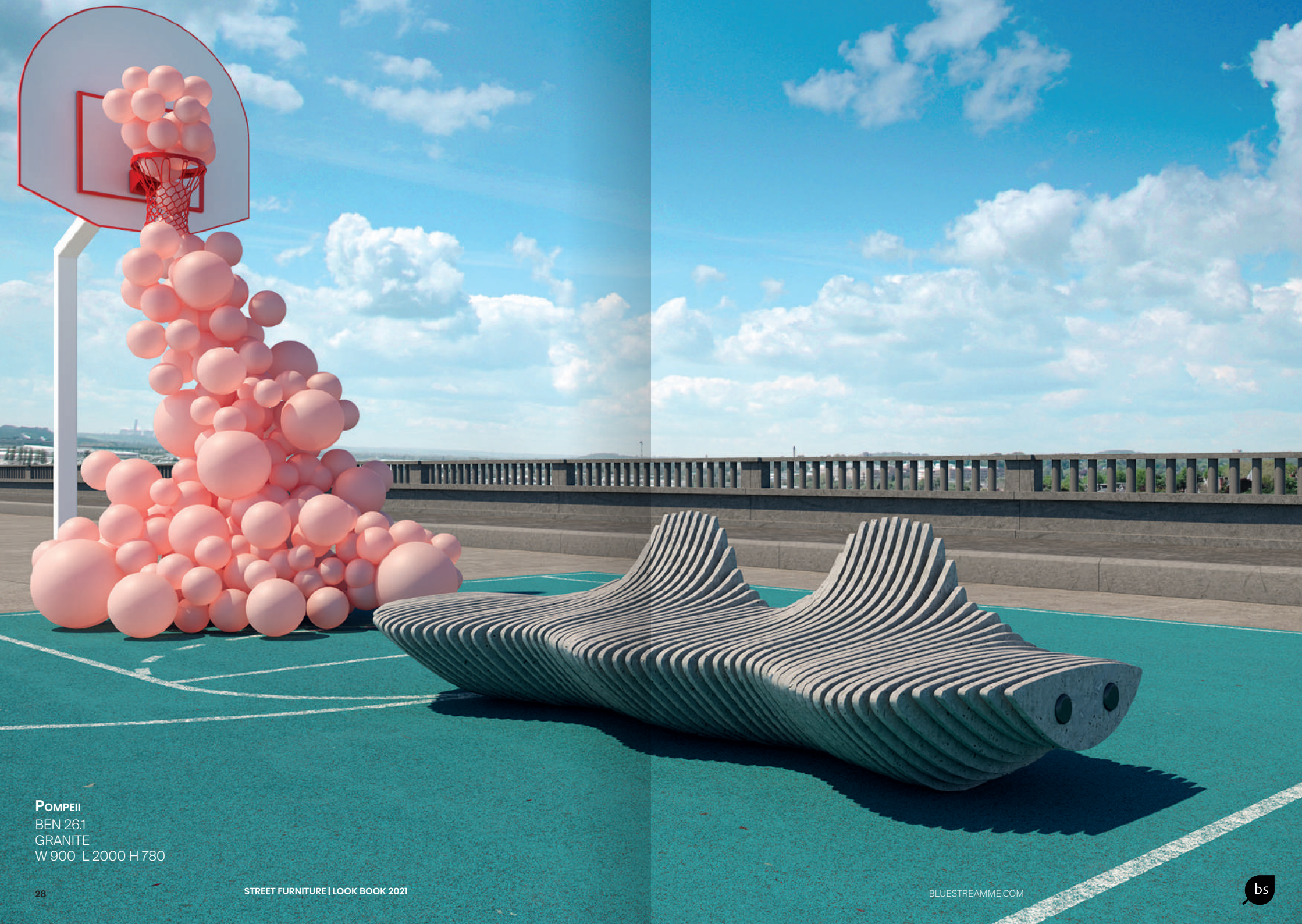
**orli**  
BEN 7.2  
STEEL, WOOD / HPL  
W 740 L 1660 H 760



**Cuneo**  
BEN 24.2  
STEEL | WOOD / HPL  
W 666 L 1560 H 770



**Vouge**  
BEN2.2  
Metal | Wood / HPL  
W 640 L 1000 H 840

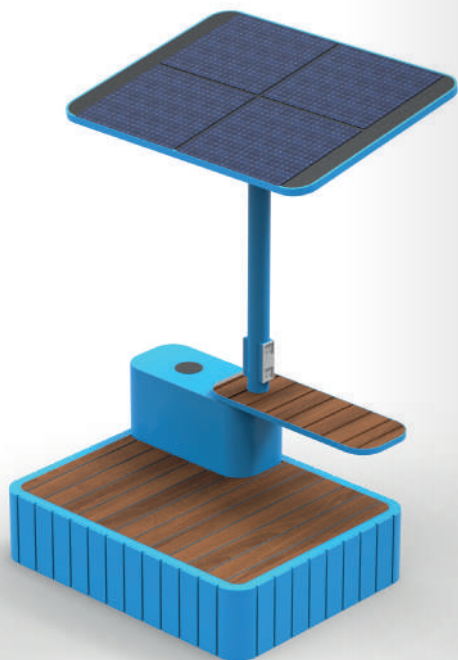


**POMPEII**  
BEN 26.1  
GRANITE  
W 900 L 2000 H 780



**arka**  
 BEN 16.4  
 STEEL, WOOD / HPL  
 W 1500 L 1200 H 2300

SERIES - ANANDA



**atlas**  
 BEN 18.4  
 STEEL, WOOD / HPL  
 W1770 L 1350 H 2300

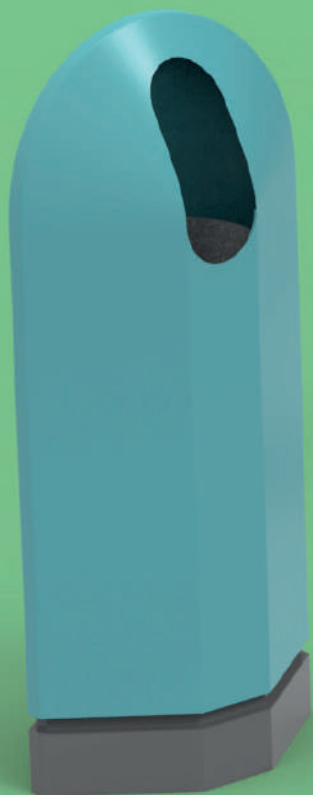
SERIES - ANANDA



**SUNSHINE**  
 BEN S2  
 Metal | Wood / HPL  
 W 1300 L 1400 H 2300

“ Any product that needs a manual  
to work is broken. ”

- Elon Musk



**TRIKON**  
BIN 10.2  
STEEL | CONCRETE  
W600 L 360 H 760



**lume**  
BIN 17.1  
STEEL  
W 380 L 350 H 800



**otari**  
BIN 6.1  
STEEL  
W 370 L 500 H 930



**broad way**  
BIN 13.1  
GRP  
W 450 L 450 H 900



**devan**  
BIN 9.2  
GRP, STEEL  
W 310 L 475 H 950



**vigo**  
BIN 4.2  
STEEL, GRP  
W 530 L 460 H 900



**monza**  
BIN 12.2  
STEEL, GRP  
W 400 L 500 H 900



**alto**  
BIN 14.1  
STEEL  
W 380 L 400 H 900



**valancia**  
BIN 11.2  
STEEL, GRP  
W 500 L 495 H 950



**loretta**  
BIN 5.1  
GRP  
W 400 L 400 H 860



**liguria**  
BIN 8.1  
STEEL  
W 380 L 910 H 750



**madki**  
BIN 2.1  
GRP  
W 700 L 700 H 900



**ponda**  
BIN 15.1  
GRP  
W 700 L 700 H 900



**lazio**  
BIN 16.1  
GRP  
W 400 L 1060 H 850



**moderna**  
BIN 7.1  
STEEL / GRP  
W 340 L 960 H 800



**mirdor**  
BIN 3.1  
STEEL  
W 600 L 600 H 850



**bosa**  
BIN 1.2  
STEEL, CONCRETE  
W 600 L 600 H 1080



“

“DESIGN CREATES CULTURE,  
CULTURE SHAPES VALUES,  
VALUES DETERMINE  
THE FUTURE.”

-Robert L. Peters

”





**JiYAAAN**  
PTR 14.1



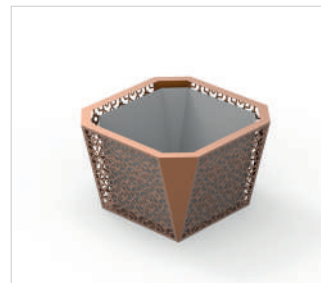
**lyon**  
PTR 11.1  
GRP  
W 1000 L1000 H 1000



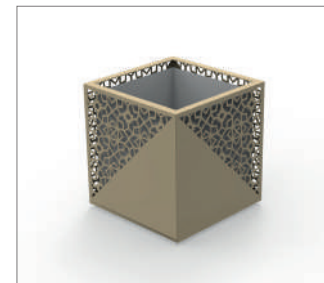
**aadi**  
PTR 14.1  
GRP  
W 1150 L 1150 H 550



**lotus**  
PTR 12.1  
GRP  
W 790 L 820 H 400



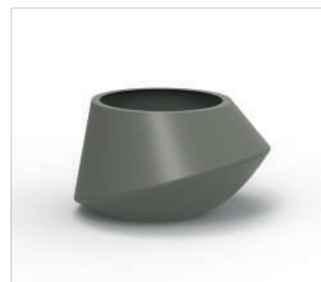
**daisy**  
PTR 2.1  
STEEL  
W1200 L 1200 H 800



**genova**  
PTR 3.1  
STEEL  
W 750 L 750 H 800



**charme**  
PTR 4.1  
STEEL  
W 666 L830 H 900



**diana**  
PTR 5.1  
GRP  
W 1200 L 1200 H 760



**nice**  
PTR 6.1  
GRP  
W 1000 L 1000 H 700



**sigma**

PTR 7.1  
GRP

W 495 L 1200 H 660



**minarva**

PTR 8.2

GRP, GRANITE

W 1200 L 1200 H 760



**alfa**

PTR 1.1  
GRP

W 1000 L 1000 H 1000



**lota**

PTR 9.1  
GRP

W 1000 L 1000 H 850



**apollo**

PTR 10.1  
GRP

W 1000 L 1000 H 1000



**beeta**

PTR 16.1  
GRP

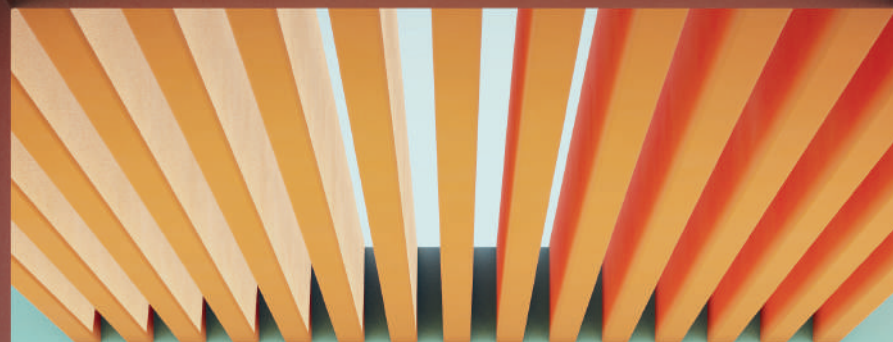
W 700 L 700 H 900



**agro**

PTR 15.1  
GRP

W 700 L 700 H 900



**PALM**  
**PTR 13.1**

GRP

W 1400 L 1400 H 900



**beegha**  
BRK 6.2  
STEEL, GRANITE  
W 250 L 80 H 900



**lofar**  
BRK 7.1  
STEEL  
W 150 L 600 H 900



**campo**  
BRK 5.41  
STEEL  
W 320 L 80 H 900



**bichi**  
BRK 1.1  
STEEL  
W 500 L 700 H 800



**lipa**  
BRK 3.1  
STEEL  
W 320 L 80 H 900



**gate**  
BRK 9.1  
STEEL  
W 400 L 75 H 900



**veera**  
BRK 2.1  
STEEL  
W 195 L 78 H 1000



**bago**  
BRK 4.1  
STEEL  
W 120 L 800, H 965



**stort**  
BRK 5.1  
STEEL  
W 400 L 120 H 620

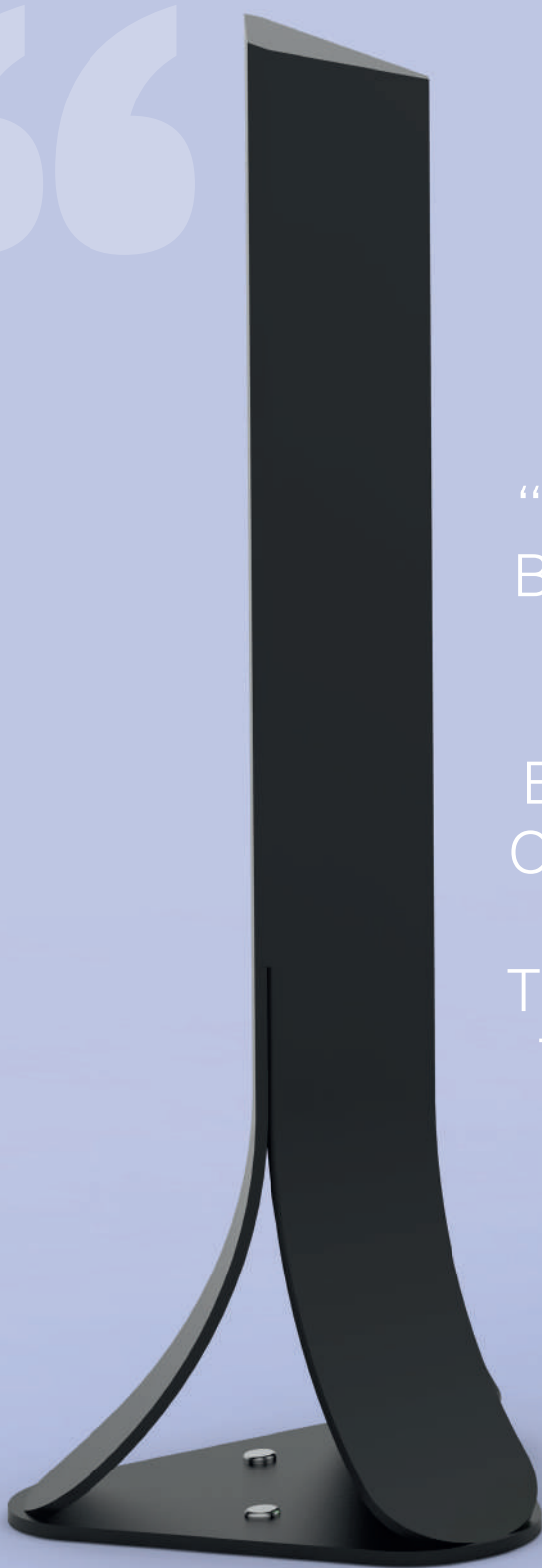
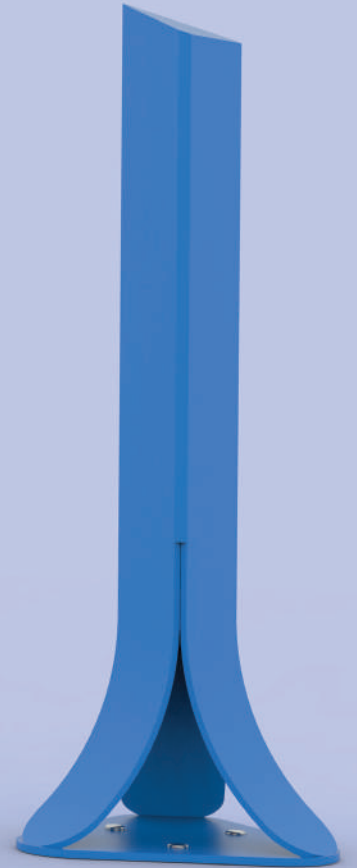
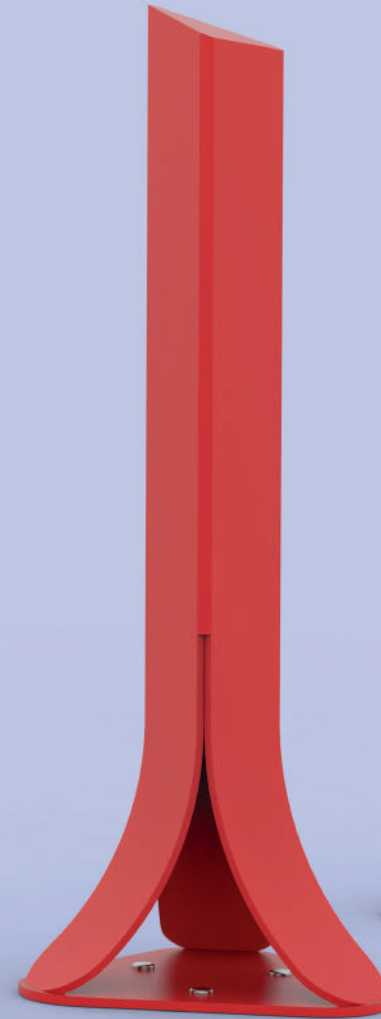


**LOFAR**  
BRK 7.1

“

“ STONE AGE.  
BRONZE AGE.  
IRON AGE.  
WE DEFINE  
ENTIRE EPICS  
OF HUMANITY  
BY THE  
TECHNOLOGY  
THEY USE. ”

-Reed Hastings



”



**PANAJI**  
BLD 4.1



**liberty**  
BLD 3.1  
STEEL  
W 200 L 150 H 900



**vasco**  
BLD 1.1  
STEEL  
W 250 L 270 H 900



**panaji**  
BLD 4.1  
STEEL  
W 100 L 240 H 910



**agoda**  
BLD 5.1  
STEEL  
W 140 L 140 H 800



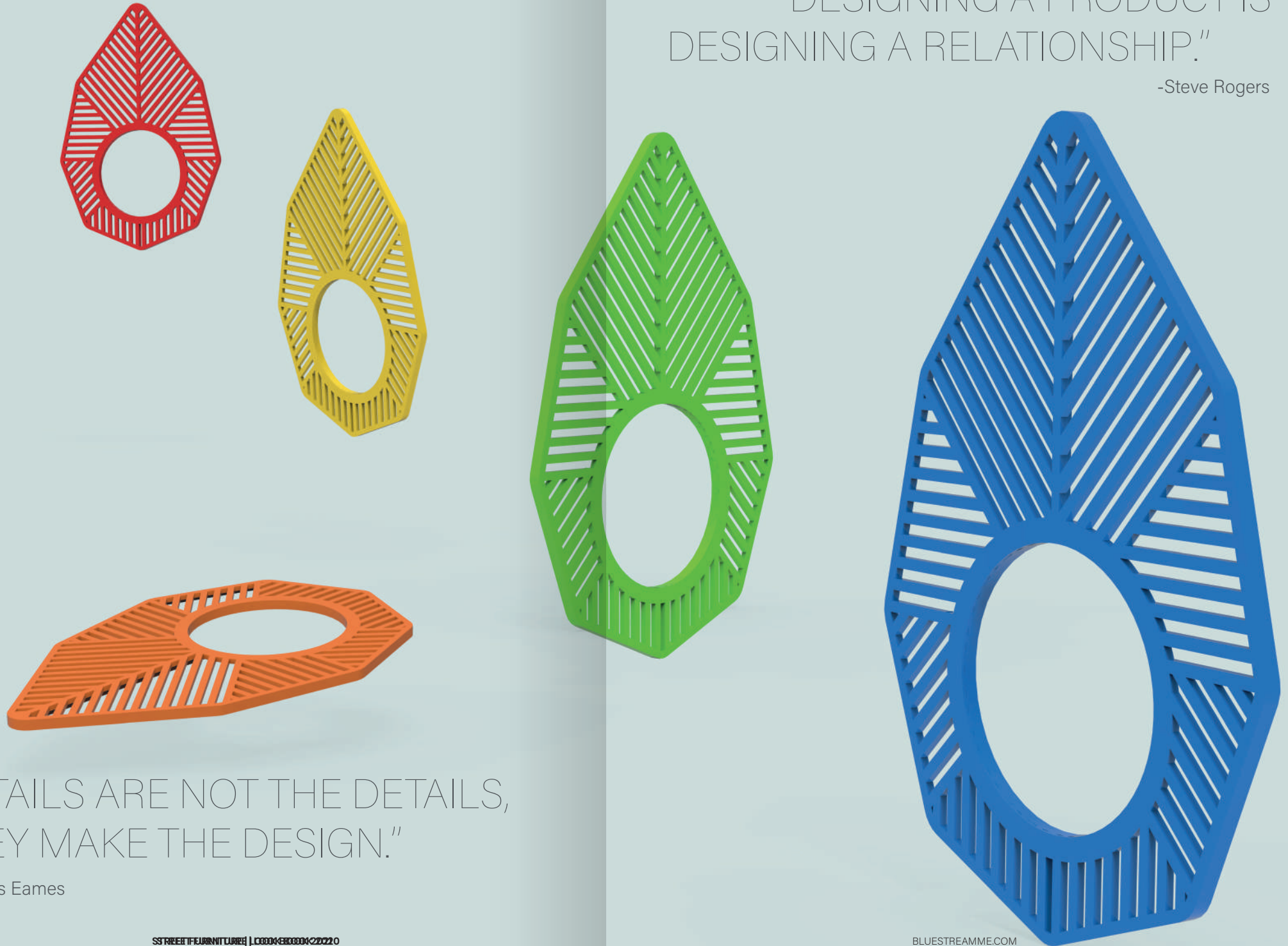
**twist**  
BLD 6.1  
GRP  
W 160 L 160 H 800



**valpo**  
BLD 2.2  
STEEL, WOOD  
W 180 L 160 H 800

"DESIGNING A PRODUCT IS  
DESIGNING A RELATIONSHIP."

-Steve Rogers

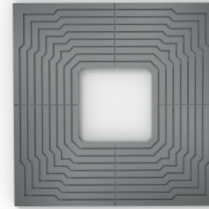


"DETAILS ARE NOT THE DETAILS,  
THEY MAKE THE DESIGN."

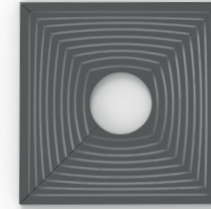
-Charles Eames



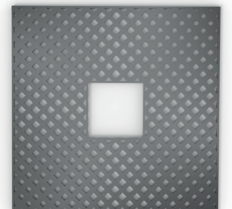
**HASTI**  
TGR 7.1



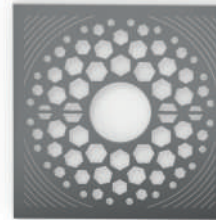
**bana**  
TGR 1.1  
STEEL  
W 1000 L 1000 H 80



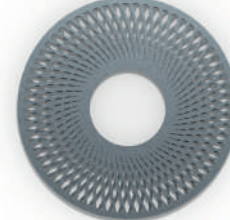
**aayata**  
TGR 5.1  
STEEL  
W 1000 L 1000 H 80



**chukki**  
TGR 2.1  
STEEL  
W 1000 L 1000 H 80



**loha**  
TGR 8.1  
STEEL  
W 1200 L 1200 H 60



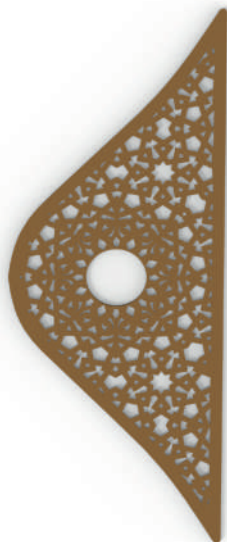
**chakra**  
TGR 3.1  
STEEL  
W 1000 L 1000 H 80



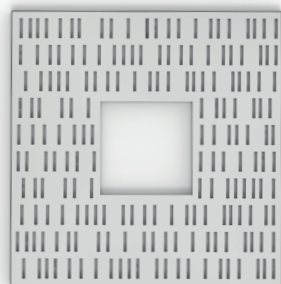
**ayas**  
TGR 6.1  
STEEL  
W 1000 L 1000 H 80



**patra**  
TGR 10.1  
STEEL  
W 1520 L 2200 H 80



**makara**  
TGR 9.1  
STEEL  
W 840 L 2200 H 80

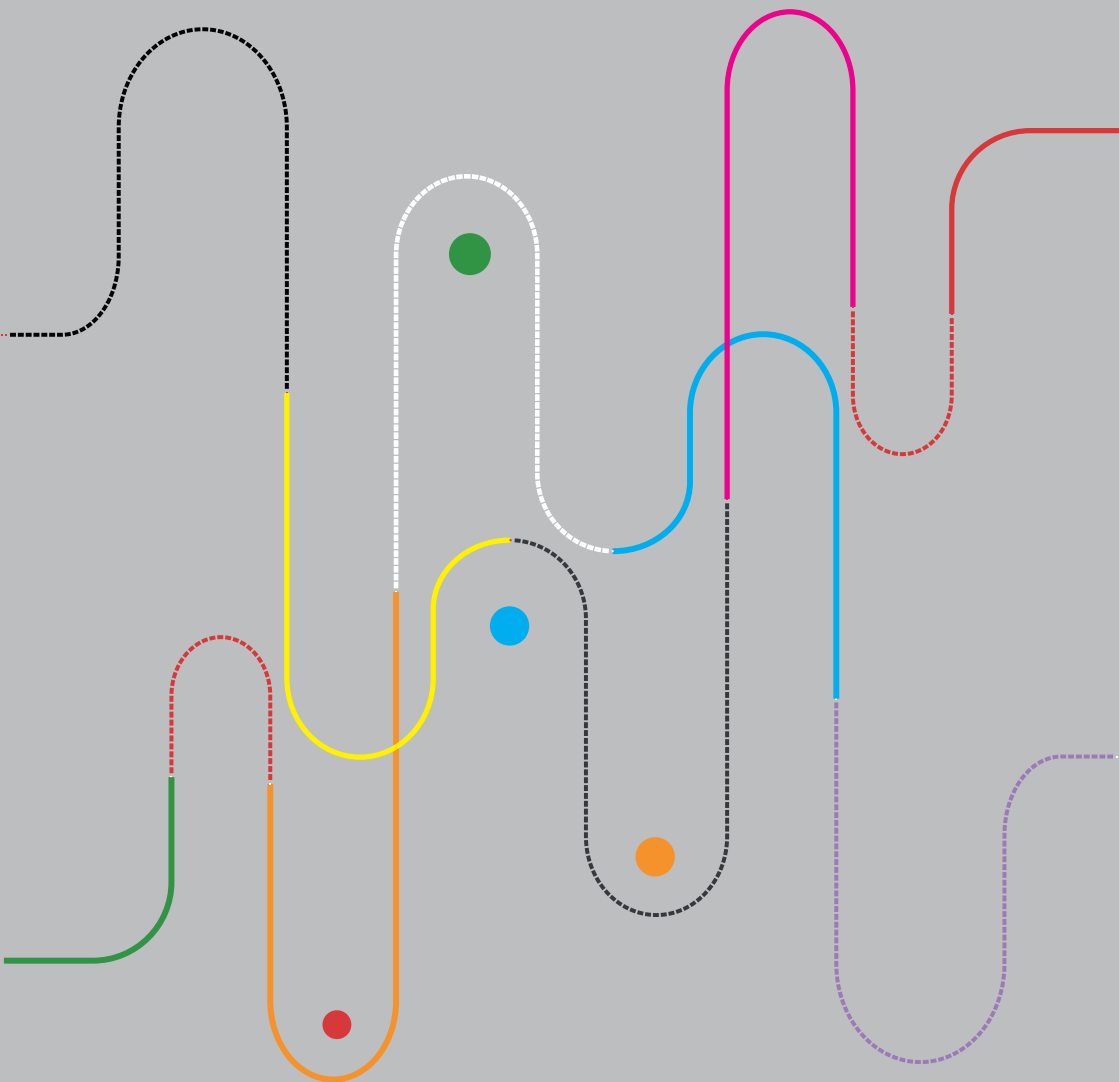


**hasti**  
TGR 7.1  
STEEL  
W 1000 L 1000 H 80



**mandala**  
TGR 11.1  
STEEL  
W 1000 L 1000 H 125





[sales@bluestreamme.com](mailto:sales@bluestreamme.com)  
[export@bluestreamme.com](mailto:export@bluestreamme.com)

+971 4 8868478  
+971 52 376 0541

TP 040101, National Industries Park  
P O Box 120507, Dubai, UAE



[BLUESTREAMME.COM](http://BLUESTREAMME.COM)