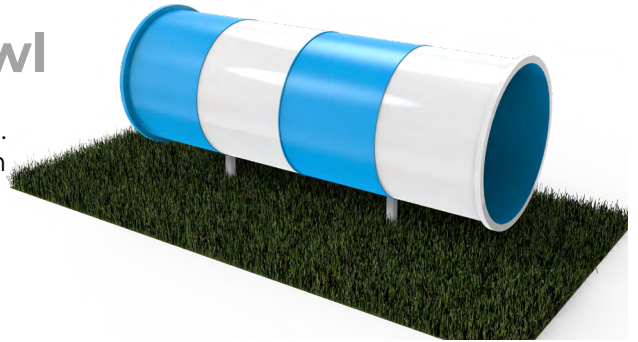
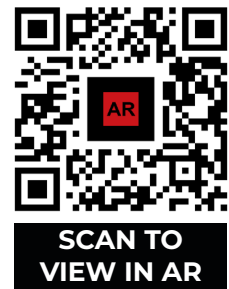
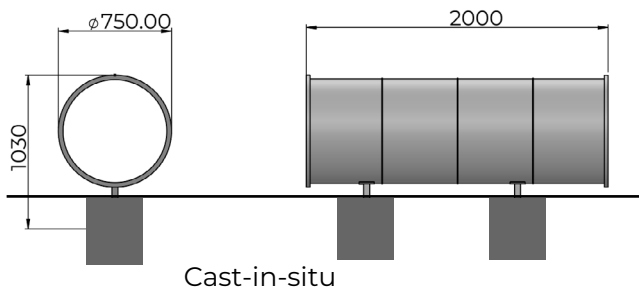


DOG PARK doggie crawl

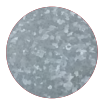
Dog park doggie crawl is made of Glass Reinforced Plastic. Supports are made of Mild Steel, Powder coated with zinc rich primer.



DIMENSIONS



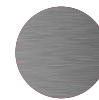
MATERIAL AND FINISH



SUPPORTS
Steel
Powder Coating

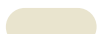


BODY
GRP
Gel coat glossy



ACCESSORIES
Stainless Steel

STANDARD COLOURS



RAL 1013 Pearl White



RAL 7016 Anthracite Grey



RAL 9005 Jet Black

FINISH - POWDER COATING

- Semi - gloss
- Matt
- Texture

ADD-ONS

Signage / Logo

WARRANTY

[Warranty document](#) (click to view)

CERTIFICATIONS

