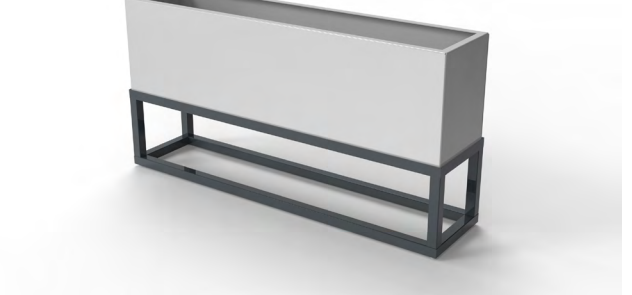


KAVA frame planter

Kava Frame Planter is made of Mild Steel body Powder coated with zinc rich primer. Inner liner can be a Galvanised steel Container or GRP laminated steel body or GRP container.



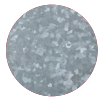
DIMENSIONS



Free standing / Surface Fixed
225 L



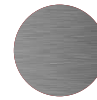
MATERIAL AND FINISH



BODY
Steel
Powder Coating



LINER
Steel / GRP
Powder Coating / Lamination



ACCESSORIES
Stainless Steel

STANDARD COLOURS



RAL 1013 Pearl White



RAL 7016 Anthracite Grey



RAL 9005 Jet Black

FINISH - POWDER COATING

- Semi - gloss
- Matt
- Texture

ADD-ONS

Signage / Logo

WARRANTY

[Warranty document](#) (click to view)

CERTIFICATIONS

